



GAT MONTHLY MEMBERSHIP PROGRESS REPORT

Results as of: 4/30/2022

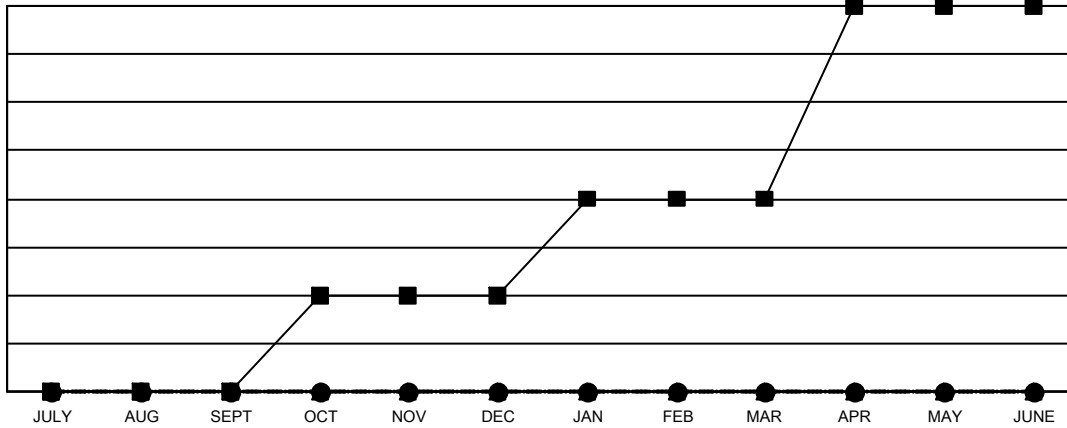
Multiple District 43

LOCATION: KENTUCKY

Clubs			
RESULTS FOR 2021-2022			
QUARTER	NEW CLUB GOAL	NEW CLUBS	DROPPED CLUBS
JULY/AUG/SEPT	0	0	1
OCT/NOV/DEC	1	0	1
JAN/FEB/MAR	1	0	1
APR/MAY/JUNE	2	0	0

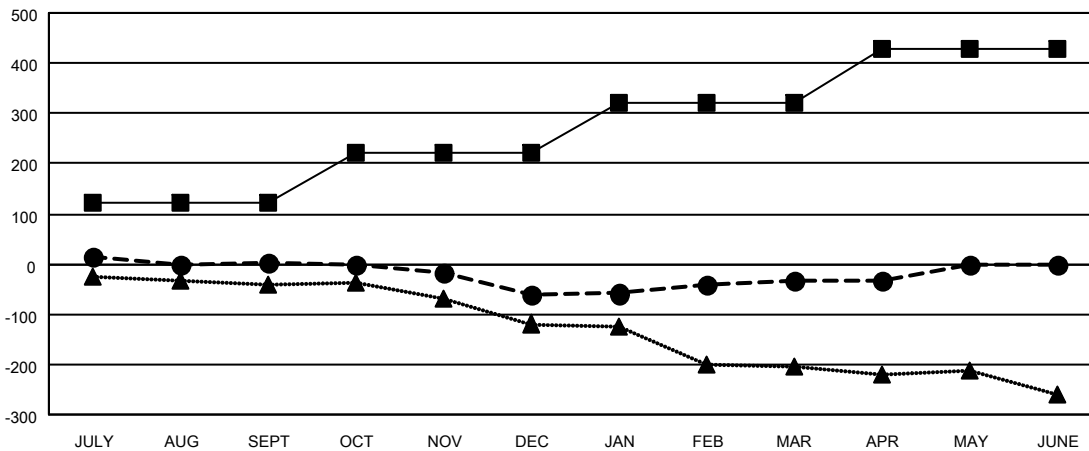
Members			
RESULTS FOR 2021-2022			
QUARTER	MEMBER GROWTH NET GOAL	MEMBER GROWTH ACTUAL	DROPPED MEMBERS ACTUAL (including transfers)
JULY/AUG/SEPT	122	115	104
OCT/NOV/DEC	100	77	131
JAN/FEB/MAR	100	121	75
APR/MAY/JUNE	105	31	28

GOALS AND ACTUAL NEW CLUBS CUMULATIVE



- CURRENT YEAR GOALS FOR NEW CLUBS
- CURRENT YEAR ACTUAL NEW CLUBS
- ▲- LAST YEAR ACTUAL NEW CLUBS

GOALS AND ACTUAL MEMBERS CUMULATIVE



- MEMBER GROWTH NET GOAL
- MEMBER GROWTH ACTUAL
- ▲- LAST YEAR MEMBERSHIP ACTUAL

DROPPED CLUBS: 3	
DROPPED MEMBERS	
DECEASED	62
CLUB CANCELLED	34
OTHER	242
TOTAL	338

73 CLUBS OF 153 ADDED 1 OR MORE NEW MEMBERS

[CLICK HERE FOR CUMULATIVE MEMBERSHIP DATA](#)

GENDER DISTRIBUTION	
MALE	2,398 (65.47%)
FEMALE	1,264 (34.51%)
NON BINARY	0 (0.00%)
PREFER NOT TO ANSWER	1 (0.03%)
TOTAL FAMILY UNIT MEMBERS	716
FAMILY MEMBERS PAYING HALF DUES	368